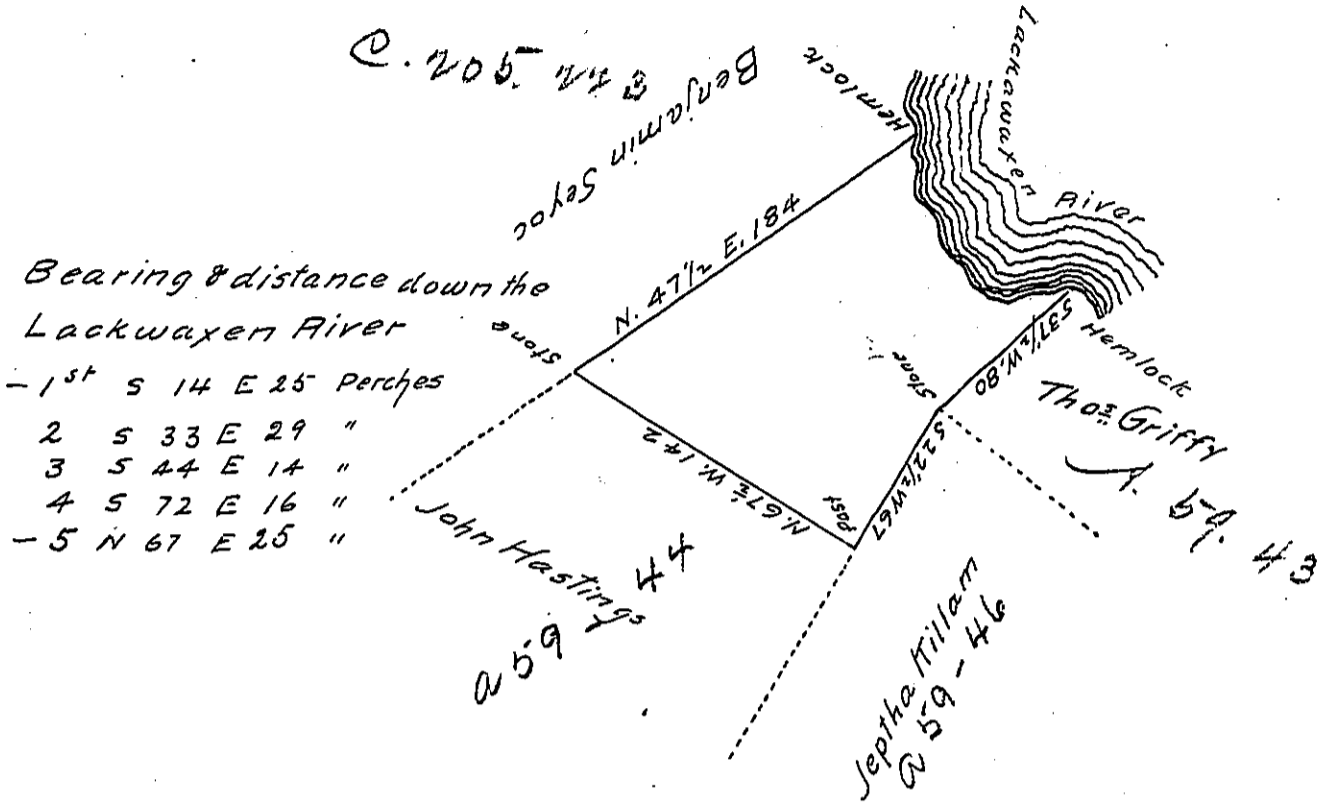


Palmyra -
PIKE



By Virtue of a Warrant dated January 20th 1853. Surveyed February 3rd 1853 to Warren Kimble the above described Tract of Land situate in Palmyra township - adjoining Lands surveyed to Thomas Griffy and Jephtha Killam on the East John Hastings on the South Benjamin Syoc on the West and the Lackawaxen River on the North (being unimproved.) Containing Ninety four Acres and Sixteen perches and the allowance of Six per Cent for Roads &c

pr. L Westbrook D.S.

To J Porter Brawley Esqr
Surveyor General of Penna

IN TESTIMONY that the above is a copy of the original remaining on file in the Department of Internal Affairs of Pennsylvania, made conformably to an Act of Assembly approved the 16th day of February, 1833, I have hereunto set my Hand and caused the Seal of said Department to be affixed at Harrisburg, this fifth day of August 1905

Loac R. Brown
Secretary of Internal Affairs.